

Basic Asset Terminal (BAT) User Guide

Ver. : SB1.0

Date: 8 Nov 2018

Table of Contents

The BAT devices	3
How to turn on the BAT?	3
Steps to insert SIM card.....	3
The BAT reporting profile (Current firmware: v2.0.0.B407)	3
LED Indicators.....	5
Fusion Platform	6
How to log on the Fusion platform?	6
How to use the Fusion platform?	6
Document History	7

The BAT devices

How to turn on the BAT?

- If the battery is not empty, the BAT device will be always on and transmitting messages to the cloud according to the intervals.

Steps to insert SIM card

- Unscrew the back cover of the BAT.
- Unplug the battery cable to open the SIM slot.
- Insert 3FF SIM cards into the device.
- Plug the battery cable back to the connector.
- Put the back cover to BAT.



The BAT reporting profile (Current firmware: v2.0.0.B407)

- The current firmware will take a reading of all sensors and then make a cellular broadcast to the Fusion platform once every 12 hours.
- User can turn on the Vibration detection on the Fusion platform (see below). When the BAT is moving, the reporting interval will change to every 5 minutes. If the BAT is not moving for another 15 minutes, the BAT will switch back to 12-hour reporting interval.
- If the USB charging cable is plugged, the BAT will wake up. The BAT will not go to the sleep mode while charging. This allows users to easily debug or change settings.



User can turn on Vibration Detection through Fusion platform.



The BAT wakes up and LEDs flash when the power cable is plugged.

LED Indicators

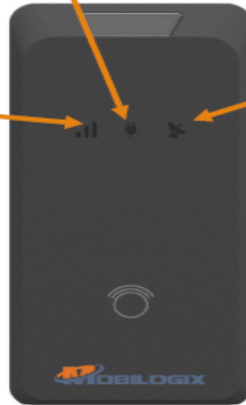
Three types of LED indicators are available: Power LED, cellular LED, location LED.



LED Indicators

Power LED:
Cycles through red, yellow, green upon startup
After start- up it will blink 1 of 3 colors which represents approximate battery life
Green.....40%-100%
Yellow.....20%-40%
Red.....Below 20%

Cellular LED:
Slow, short blinks..... Trying to register on network
Slow, Long blinks Registered and idle
Fast blinks Data transfer in progress



Location LED:
Blinking.....Acquiring location
Solid.....Location acquired

Fusion Platform

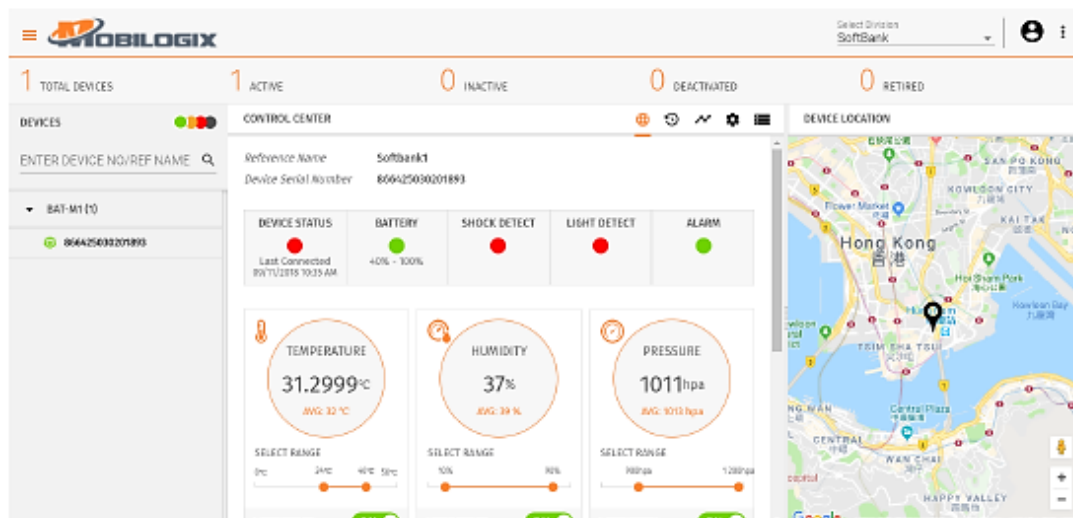
How to log on the Fusion platform?

- Open the browser, enter the URL:
- Enter the user name and password on the login page
 - User name:
 - Password:

How to use the Fusion platform?

You can track and monitor the BAT device on the Fusion platform. There are three main windows on the portal.

- **Devices** – All registered BAT will be shown on this column.
- **Control Center** – It shows the status of the BAT and the sensor data (temp, humidity, pressure). Also, user can set the notification on this page.
- **Device location** – GPS location of the BAT is shown on the map.



Document History

Version	Description	Created / modified by
1.0	First initial draft	Harris Ming
1.01	Modified draft	Peter Akpah